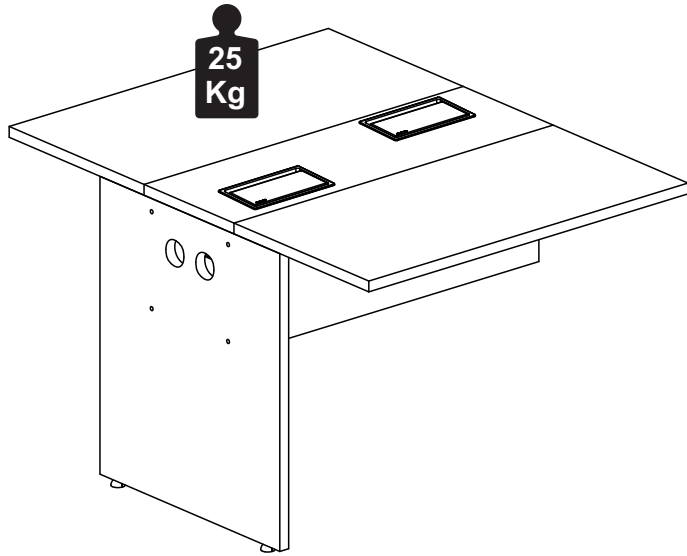


Capacidade de Carga - Load Capacity - Capacidad de carga



Manutenção e Limpeza

Vidros: pano levemente umedecido com álcool, seguido de pano seco.
Madeiras: pano levemente umedecido com água, seguido de pano seco.
*Nunca utilizar produtos químicos ou abrasivos.

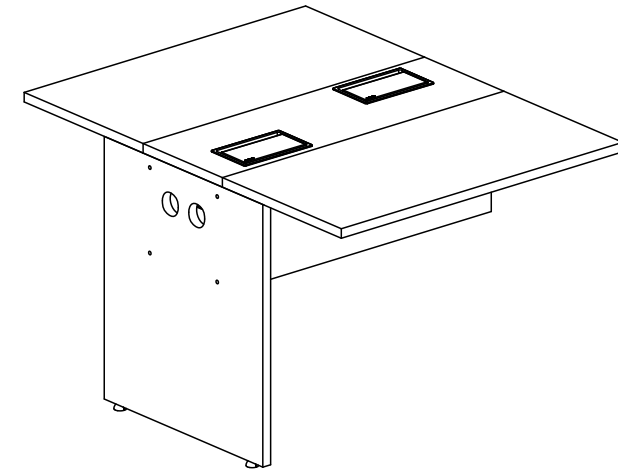
Maintenance and Cleaning

Glasses: cloth lightly moistened with alcohol, followed by dry cloth.
Woods: cloth slightly moistened with water, followed by cloth seco.
*Never use chemicals or abrasives.

Mantenimiento y Limpieza

Vidrios: legeramente humedecido con alcohol, seguido de un paño seco.
Madera: ligeramente humedecido con agua, seguido de un paño seco.
*No utilice nunca productos quimicos o abrasivos.

INSTRUÇÕES DE MONTAGEM ASSEMBLY INSTRUCTIONS INSTRUCCIONES DE MONTAJE PLATAFORMA DUPLA ACOPLAR PLATAFORMA DOBLE DOUBLE PLATFORM



REF. #SAT9013-1213-1313-1513



MOBILIÁRIO

PARA ESCRITÓRIO

GEBB Work Ind. de Móveis Ltda.

Rua Felix Roman, 190

São Valentin

95709-170 - Bento Gonçalves - RS - Brasil

Fone: (0XX54) 3454-1105 - (0XX54) 3453-1407

Phone: (0XX54) 3454-1105 - (0XX54) 3453-1407

E-mail: pedidos@gebbwork.com.br

www.gebbwork.com.br

WhatsApp: +55 54 99177-8324



1 P.



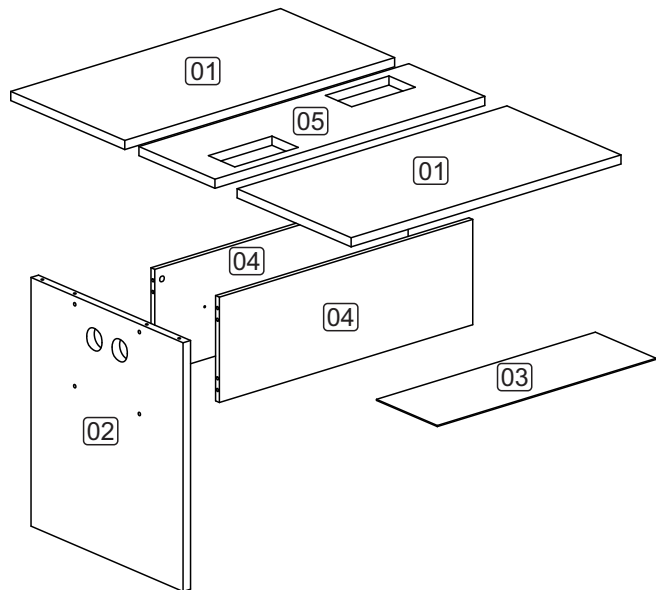
8mm



35mm

LISTA DE PEÇAS

- 01 - Tampo
- 02 - Painel Central
- 03 - Travessa Inferior
- 04 - Painel Frontal
- 05 - Régua



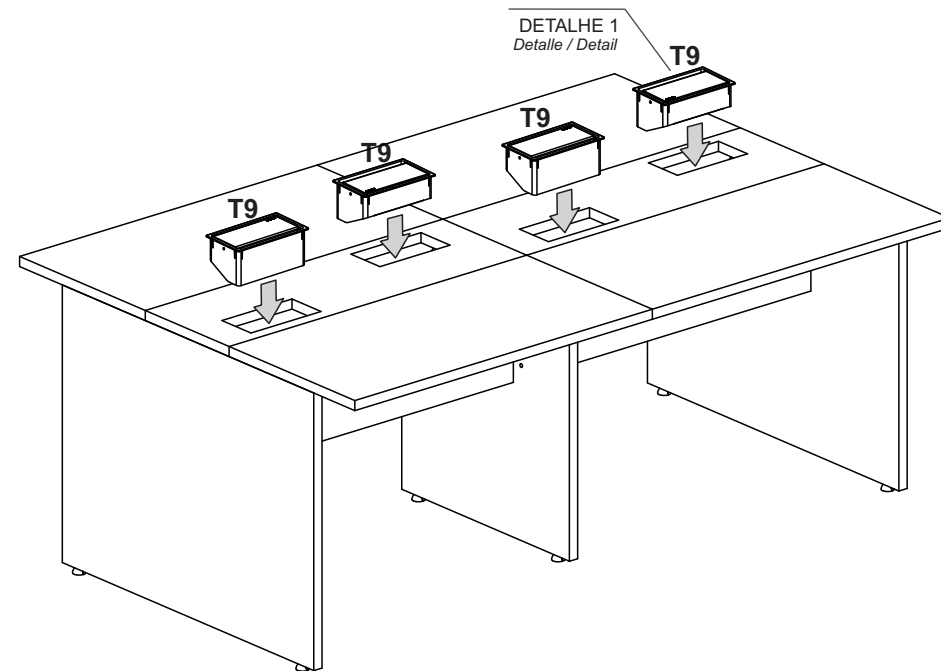
LISTA DE PIEZAS

- 01 - Tapa
- 02 - Panel Central
- 03 - Traviesa Inferior
- 04 - Panel Delantero
- 05 - Traviesa

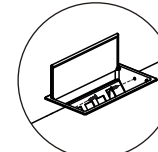
PARTS IDENTIFICATION

- 01 - Top
- 02 - Center Panel
- 03 - Lower Traverse
- 04 - Front Panel
- 05 - Traverse

6



Detalle / Detail
DETALHE 1



Ver manual de montagem da caixa.
Consulte el manual de montaje de la caja.
See box assembly manual.

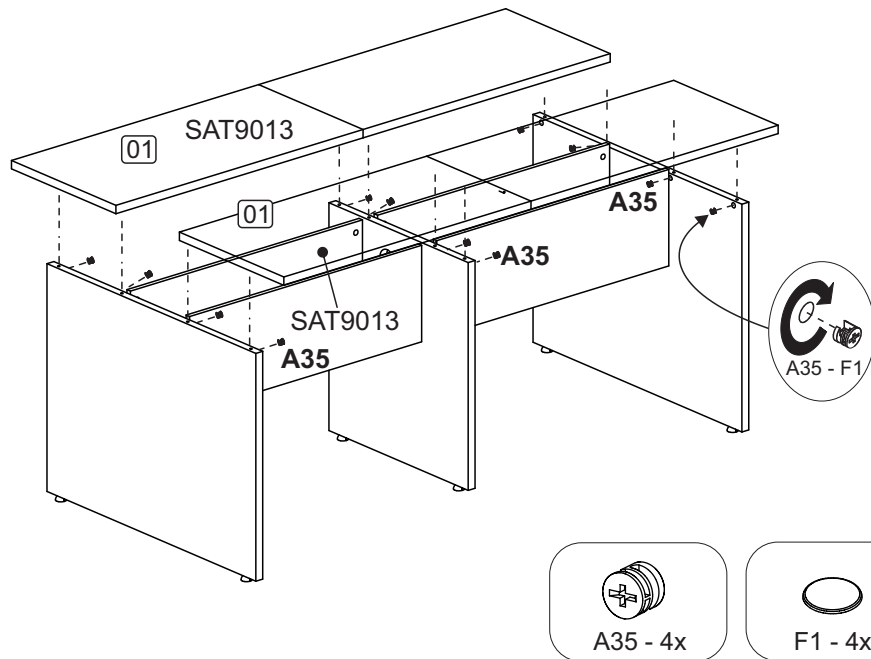


T9 - 2x

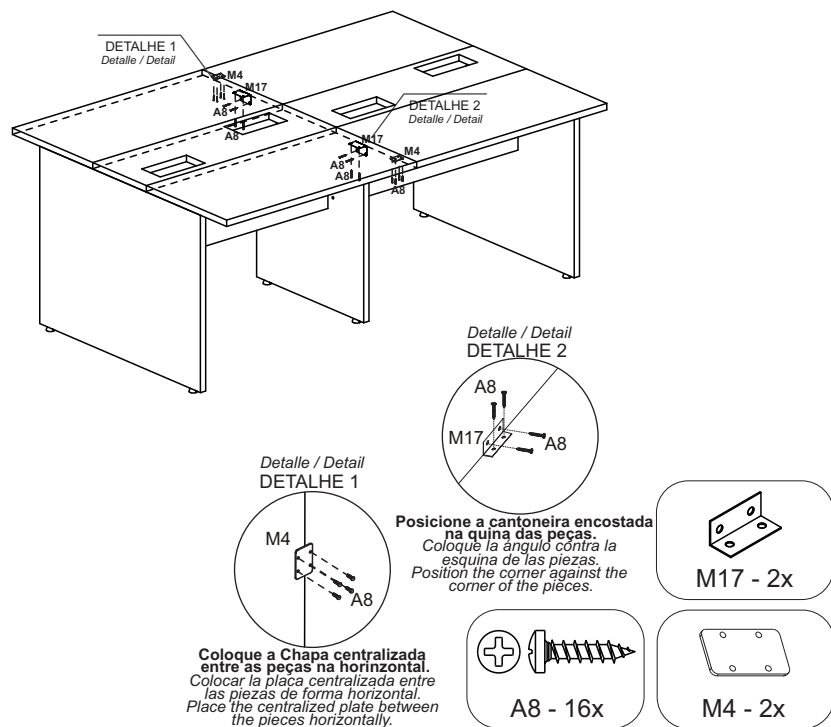


T14 - 2x

4



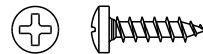
5



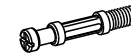
06/08

ACESSÓRIOS ACCESSORIES ACCESORIOS

A8 - PARAF. 4,0x14 CP
32x



A29 - PARAF. MINIFIX
M6x33m 12x



A35 - TAMBOR
MINIFIX 12x



A36 - BUCHA M6x13
12x



B1 - SUPORTE PRAT.
METÁLICO 8x



M9 - CANTONEIRA 2 FUROS
13X13 ZAMAC 3X



F1 - TAPA FURO Ø18
4x



L2 - SAPATA PLAST.
SEXT. 2x



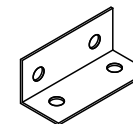
L5 - BUCHA PLÁSTICA
P/SAPATA 5/16 2x



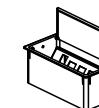
M4 - CHAPA P/CONEXÃO
04 FUROS 2x



M17 - CANTONEIRA L
4 FUROS 34x34MM 2x



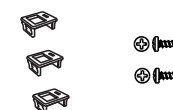
T9 - CAIXA DE TOMADA
PLÁSTICA 2x



T10 - BASE PASSA CABO
25x60 PTO. 2x



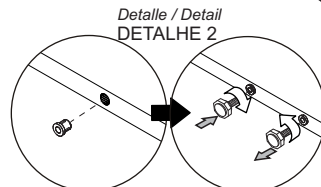
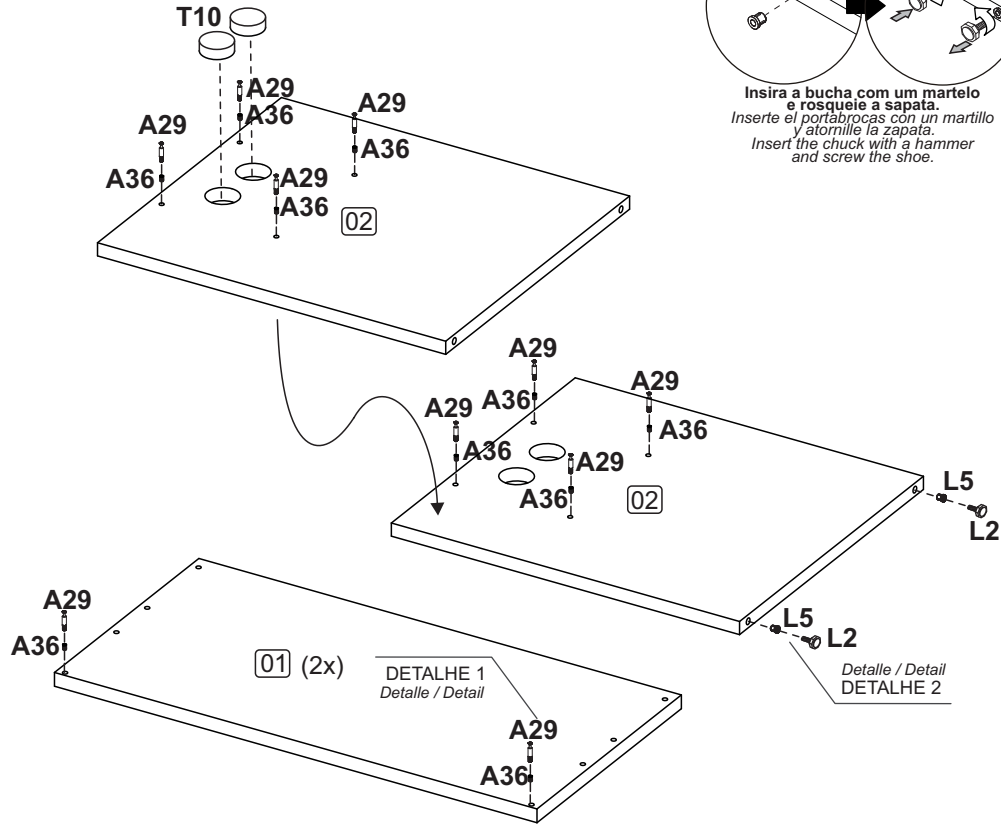
T14 - KIT P/CAIXA DE
TOMADA 1x



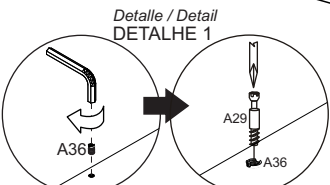
03/08

1 PRÉ-MONTAGEM

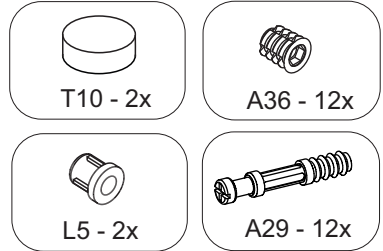
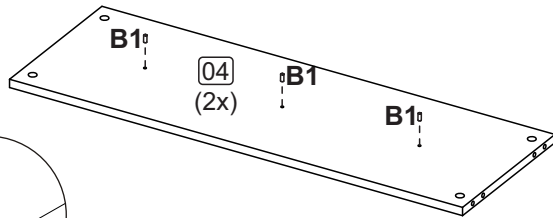
Preasamblea
Pre-assembly



Insira a bucha com um martelo e rosquete a sapata.
Inserte el portabrocas con un martillo y atornille la zapata.
Insert the chuck with a hammer and screw the shoe.

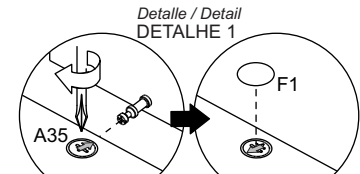
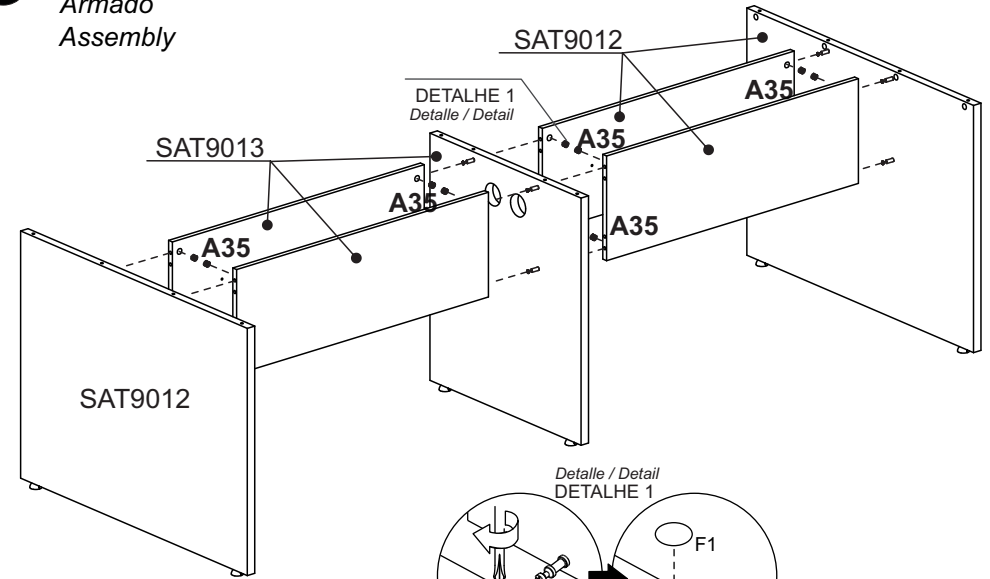


Com uma chave allen insira a bucha na peça, após, rosquete o parafuso.
Con una llave Allen, inserte el mandril en la pieza y luego, atornille el tornillo.
Using an Allen key, insert the chuck into the part, then screw the screw.

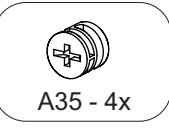


2 MONTAGEM

Armado
Assembly



Depois de encaixar as peças coloque o tambor com a sua seta voltada para o parafuso. Para apertar Gire no sentido horário.
Después de colocar las piezas, coloque el tambor con su flecha hacia el tornillo. Para apretar, gire en sentido horario.
After fitting the parts, place the drum with its arrow facing the screw. To tighten, turn clockwise.



3

